

LABFAST LOW ODOR

Best Performance, Long Working Time, Quick Curing and Low Odor Polyaspartic



Description

The LABFAST LOW ODOR is a two-component (1A:1B), non-yellowing, low odor polyaspartic floor coating system. The LABFAST LOW ODOR is used as a clear topcoat and a colored base coat using a common hardener. High solids versions (85% and 90%) are available as well as a prolonged working time version (+) and a fast cure version (-). The system provides a quick turnaround with very rapid curing time with a tack free as low as 45 minutes* allowing the installation of the floor system in a single day. The product displays excellent curing capability even at very low temperature levels. This product offers superior mechanical and chemical properties and is low maintenance. It also displays a superior aesthetic finish and excellent UV stability which makes it ideal for interior and exterior applications. We recommend the utilization of the LABTEC Vinyl Chips in combination with LABFAST/LABSHIELD products. Two- or three-coat systems can be considered.

* Depends on R.H. and temperature levels

Uses

The chemical and mechanical properties of the LABFAST LOW ODOR provide excellent results for several applications:

- + Garages
- + Other residential applications
- + Commercial centers
- + Office buildings
- + Retail stores
- + Manufacturing facilities
- + Public facilities including hospitals and schools
- + Other commercial uses

Advantages

- + Faint odor
- + High solids content, ~85% and 90%
- + Non-yellowing
- + Excellent impact and abrasion resistance
- + Easy to use 1A:1B system with common hardener for the base coat and top coat
- + Possibility to install base coat and top coat in a single workday
- + Cures quickly - recommended to obtain best curing at very low temperature levels (below -10°C / 14°F)
- + Ideal for exterior applications
- + (+) version offers longer working time of approx. 25 min.
- + Possible to install two- or three-coat systems
- + Easy to install due to the very low viscosity of the product
- + Very long recoat window and pot life
- + Excellent chemical and mechanical resistance

- + Impermeability / low moisture sensitivity
- + Superior gloss finish
- + High density of the product prevents dirt penetration resulting in low maintenance

Application Data

Mix Ratio	1A:1B		
Packaging	2 US gallon kits (2 x 3.78L) 10 US gallon kits (2 x 18.9L)		
Color	Clear		
Solids Coverage / US GAL	Mils	Sq. Ft.	
	4	400	
	5	320	
	6	267	
	7	229	
	8	200	
	9	178	
	10	160	
	11	145	
	12	133	
	13	123	
	14	114	
	15	107	
	16	100	
Shelf Life	Six months, in original unopened factory pails under normal storage conditions		
Application Temperature	Min -10°C / 14°F, Max 30°C / 86°F		
Cure Time	22°C / 72°F and 50% Rel. Hum.		
Version	85 LO -	85 LO +	90 LO -
Working time	15 min	25 min	15 min
Tack Free	45 min	2 h	45 min
Recoat	45 min - 24 h	2 - 24 h	45 min - 24 h
Dry Through	2 h	6 h	2 h
Foot Traffic	24 h	24 h	24 h
Light Traffic	48 h	48 h	48 h
Full Cure	2 weeks	2 weeks	2 weeks



Technical Properties

Version	85 LO -	85 LO +	90 LO -
Hardness ASTM D2240 Shore D at maturity	70	70	70
Abrasion (1000 cycles) ASTM D4060	30 mg loss	30 mg loss	30 mg loss
Pull Off Test ASTM D4541	≈3 Mpa	≈3 Mpa	≈3 Mpa
Solids Content	85%	85%	90%
Viscosity (cps)	300 +/-50	300 +/-50	500 +/-50
VOC Content	169 g/l	169 g/l	122 g/l
Elongation ASTM D412	51%	-	-
Tensile Strength ASTM D412	5500 psi	5500 psi	5500 psi
DE 500 hr ASTM 3424	<2.0	<2.0	<2.0
Gardner Impact(Dir/Rev)	>140 lbs	>140 lbs	>140 lbs

Surface Preparation

Concrete should be clean, dry and free of grease, oil, paint, curing agents or any contaminants that may inhibit proper adhesion. Concrete should be cured at least 28 days before applying the coating system. If the concrete slab has been installed within 28 days, the LABPOX MVB moisture mitigation system could be considered system (refer to the LABPOX MVB technical data sheet for application details).

Proper testing procedures should be practiced with regards to soil acidity and moisture vapor transmission. Take a pH reading to ensure concrete is neutral (a reading between 5 and 9 is acceptable). Use a TrameX® CME / CMExpert to measure the moisture content of the concrete slab. Moisture content must be below 4% before applying the product. It is necessary to take several measurements at various places on the slab. If the reading is higher than 4%, steps will be required to neutralize the soil moisture. The first thing to do is to make sure that the floor is completely dry before application. Floors with higher results can receive the LABPOX MVB moisture mitigation.

Surface must be shot blasted or prepared with an equivalent mechanical means in line with CSP-2 or more depending on the application. Ensure the surface is free of contaminants, and the pores are open to allow the product to penetrate.

If the product is applied to an existing LABFAST/LABSHIELD flake flooring system that has been cured for more than 24 hours (at 22°C / 72°F), the floor surface should be sanded properly until a matte appearance is reached above and between the flakes. To achieve this result, we recommend the use of a sander equipped

with a sponge pad which will follow the profile of the surface and allow the sandpaper to reach the low points between the flakes. It is necessary to sand in a multidirectional way. Repeat until a matte finish is achieved on the entire floor. It is also necessary to use xylene to remove all dust after sanding and to soften the existing layer so that it can bond with the new layer. The use of xylene for this task is mandatory as it will soften the previous coat for better adhesion. The xylene must be completely evaporated before applying the next coat.

If the product is applied over an existing LABPOX flooring system that has been cured for a period longer than 24 hours, it should be sanded with a proper floor machine. A mechanical bond to a sanded surface is required and the pores of the existing coating must be opened for better adhesion. Vacuum dust and properly wipe the surface with alcohol or solvent prior applying the LABFAST LOW ODOR. The alcohol or solvent must be completely evaporated before applying the product. This preparation is necessary to ensure proper adhesion. Conduct adhesion tests if there is a doubt about surface preparation.

Once cured, the base coat with the flakes should be scraped and cleaned after appropriate hardness is reached prior applying the top coat.

Mixing

Before final mixing, pre-mix part A at low speed using a Jiffy® or an Exomixer® mixer blade. Special attention must be paid to colored versions of the product since pigments may have separated from the rest of the formulation during storage. Mixing should be done until the color is uniform.

Then, using a Jiffy® or an Exomixer® mixer blade, mix two parts of A and one part of B together at low speed in a separate container. The mixing container must be clean and free of any outside particle. Mix thoroughly for a minimum of three minutes, until a completely homogeneous mixture is obtained. Use a low-speed drill (300-450 rpm) to minimize the entrapping of air. It is recommended to activate the mixer in the reverse mode after 90 seconds for the liquid to mix from the bottom of the mixing can to the top. Make sure to scrap sides and bottom of mixing container so no unmixed material remains. Mix only the necessary quantity to be used according to the specified pot life / working time.

Application

Best results will be obtained between -10°C / 14°F et 30°C / 86°F and with a relative humidity of less than 80%. This product will also cure at temperatures well below -10°C / 14°F. If a heated floor is installed, ensure that the system is turned off during application and for the full duration of the cure. The product has been specially designed to adhere on concrete surfaces.



Once the surface has been properly prepared, squeegee and back roll the product. It is recommended to apply the product in a multi-directional (north-south, east-west) motion to ensure proper coating thickness.

The following flake systems can be considered:

	2-Coats System		3-Coats System		
	Base Coat + LABTEC Chips	Top Coat	Base Coat 1	Base Coat 2 + LABTEC Chips	Top Coat
LO 85	8-13 mils	8-13 mils	4-9 mils	4-9 mils	8-13 mils
LO 90		8-13 mils			8-13 mils

The LABFAST LOW ODOR is used as a base coat (colored) and a clear topcoat using a common hardener. A prolonged working time version (+) and a fast cure version (-) are available.

We recommend the LABTEC Vinyl Chips when installing a flake system. Do not exceed a thickness of 30 mils for the entire system as solvent entrapment may occur above those levels. The color of the base coat should match the type of flake blend used. With that regards, Labsurface has made recommendations in the LABTEC Vinyl Chips section of this document.

It is also possible to use the LABFAST LOW ODOR as a protective coat over epoxy. In addition to offering a superior chemical resistance and cleanability, the LABFAST LOW ODOR also provides additional UV protection that will significantly slow the yellowing of epoxy over time. Colored versions of the LABFAST LOW ODOR can also be used as a protective coat, either pre-tint or using the LABTEC Universal Pigment Pods. When used as a protective layer on epoxy, a thickness of 10 mils is recommended.

Proper tests should be conducted prior application. Contact a Labsurface representative for additional information.

Recoat

If the product is applied to an existing LABFAST/LABSHIELD flooring system that has been cured for more than 24 hours (at 22°C / 72°F), the floor surface should be sanded properly until a matte appearance is reached above and between the flakes. To achieve this result, we recommend the use of a sanding machine equipped with a soft sanding pad which will follow the profile of the surface and allow the sandpaper to reach the low points between the flakes. It is necessary to sand in a multidirectional way. Repeat until a matte finish is achieved on the entire floor. It is also necessary to use xylene to remove all dust after sanding and to soften the existing layer so that it can bond with the new layer. The use of xylene for this task is mandatory. Make sure the solvent is completely evaporated and there are no residues. In case there are remaining residues, wipe the surface using a dry rag or swab.

Limitations

Requires a dry substrate. Moisture content of the substrate must be measured with a Tramex® CME / CMExpert at must be below 4% before applying the product. This product should not be applied to concrete substrates that show high levels of moisture/humidity unless a moisture a LABPOX MVB moisture mitigation system is used. Do not exceed a thickness of 30 mils for the entire system as solvent entrapment may occur above those levels. It is recommended to use 100% solids products and avoid solvent-based products for installations beyond those normal thickness levels. It is also recommended to do proper testing if a non-conventional installation is considered. Everything else being equal, thicker is the film, longer is the curing time. Drying time will be faster in a hot and/or humid environment. Conversely, the drying time will be longer in a cold and/or dry environment. Do not clean the finished surface during the week following installation. Keeping the product stored at room temperature.

Labsurface stands behind the quality of its products. However, Labsurface cannot guarantee results since Labsurface has no control over surface preparation, operating conditions and application procedures. Clients are solely responsible to test Labsurface's products to determine if they perform as expected.

To meet our strict requirements, we are continuously testing our coatings and on occasion, formulations may be modified to improve certain properties within each coating. Information and data included in this reference document may not be up to date as of the date of reference. Contact Labsurface for further information regarding the limitations of this product.



Available Colors

Clear

Pre-tint: Grey, Tan, Black, White

LABTEC Vinyl Chips

Signature LABTECH Chips 1/4"



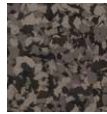
BEAN
Pre-tint Color: Tan
Pods Suggestions:
Beechwood,
Sand, Tan, Black



CABIN FEVER
Pre-tint Color: Grey
Pods Suggestions:
Light Concrete



CREEKBED
Pre-tint Color: Tan
Pods Suggestions:
Beechwood, Sand,
Tan, Light Concrete



DARKSIDE
Pre-tint Color: Black
Pods Suggestions:
Stone Concrete, Black



DOMINO
Pre-tint Color: Grey
Pods Suggestions:
Light Concrete, Black,
White



GRAVEL
Pre-tint Color: Grey
Pods Suggestions:
Light Concrete,
Dark Concrete,
White



GUNFLINT
Pre-tint Color: Tan
Pods Suggestions:
Beechwood, Sand,
Tan, Black



MANDRAS
Pre-tint Color: Grey
Pods Suggestions:
Light Concrete, Dark
Concrete



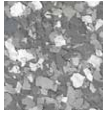
NIGHTFALL
Pre-tint Color: Grey
Pods Suggestions:
Mid Concrete, Dark
Concrete, Light
Concrete, Black



ORBIT
Pre-tint Color: Grey
Pods Suggestions:
Light Concrete, Mid
Concrete, Black



OUTBACK
Pre-tint Color: Tan
Pods Suggestions:
Beechwood, Beige,
Sand, Tan, Black



RAINSTORM
Pre-tint Color: Grey
Pods Suggestions:
Light Concrete,
White



SHORELINE (CAMEL)
Pre-tint Color: Tan
Pods Suggestions:
Tan, Sand



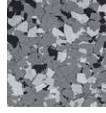
STAMPEDE
Pre-tint Color: Grey
Pods Suggestions:
Light Concrete, Mid
Concrete, Stone
Concrete, Black,
White



STORM
Pre-tint Color: Grey
Pods Suggestions:
Light Concrete,
Mid Concrete,
Black, White



TIDAL WAVE
Pre-tint Color: Grey
Pods Suggestions:
Light Concrete, Dark
Concrete, White



WOMBAT
Pre-tint Color: Grey
Pods Suggestions:
Light Concrete, Mid
Concrete, Black,
White



WOODCLIFF
Pre-tint Color: Tan
Pods Suggestions:
Beechwood, Sand,
Beige, Tan, Dark
Concrete

Marble LABTECH Chips



BASALT
Pre-tint Color: Grey
Pods Suggestions:
Light Concrete, Mid
Concrete, Dark
Concrete



SCHIST
Pre-tint Color: Grey
Pods Suggestions:
Light Concrete, White



DOLERITE
Pre-tint Color: Grey
Pods Suggestions:
Stone Concrete,
Mid Concrete,
Dark Concrete



PUMICE
Pre-tint Color: Grey
Pods Suggestions:
Sand, Light Concrete



OBSIDIAN
Pre-tint Color: Grey
Pods Suggestions:
Tan,
Mid Concrete, Stone
Concrete, Dark Concrete,
Light Concrete

Terrazo LABTECH Chips



DENALI
Pre-tint Color: Grey
Pods Suggestions:
Stone Concrete,
Mid Concrete,
Light Concrete



JUNEAU
Pre-tint Color: Grey
Pods Suggestions:
Stone Concrete,
Mid Concrete,
Light Concrete



ARMADILLO
Pre-tint Color: Grey
Pods Suggestions:
Stone Concrete,
Beechwood

Refer to the most recent Material Safety Data Sheet prior using this product.

Labsurface

101-1079 des Forges, Terrebonne, QC, Canada J6Y 0J9

Phone: 450-966-9000 / Fax : 450-621-3135

Labsurface.com

Signature LABTECH Chips 1/16"



BEAN
Pre-tint Color: Tan
Pods Suggestions:
Beechwood,
Sand, Tan, Black



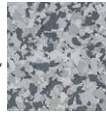
CABIN FEVER
Pre-tint Color: Grey
Pods Suggestions:
Light Concrete



DARKSIDE
Pre-tint Color: Black
Pods Suggestions:
Stone Concrete,
Black



DOMINO
Pre-tint Color: Grey
Pods Suggestions:
Light Concrete, Black,
White



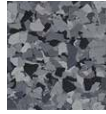
GRAVEL
Pre-tint Color: Grey
Pods Suggestions:
Light Concrete,
Dark Concrete,
White



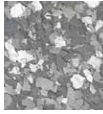
GUNFLINT
Pre-tint Color: Tan
Pods Suggestions:
Beechwood, Sand,
Tan, Black



MANDRAS
Pre-tint Color: Grey
Pods Suggestions:
Light Concrete, Dark
Concrete



NIGHTFALL
Pre-tint Color: Grey
Pods Suggestions:
Mid Concrete, Dark
Concrete, Light
Concrete, Black



RAINSTORM
Pre-tint Color: Grey
Pods Suggestions:
Light Concrete,
White



SHORELINE (CAMEL)
Pre-tint Color: Tan
Pods Suggestions:
Tan, Sand