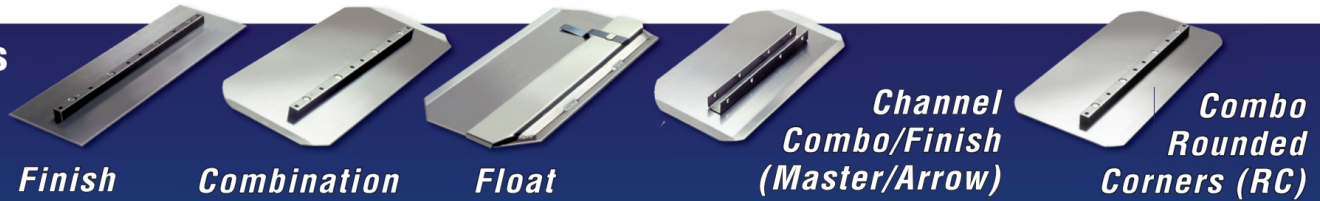


# PROFORM® POWER TROWELER REPLACEMENT BLADES



4 Blades Per Box



Finish

Combination

Float

Channel Combo/Finish (Master/Arrow)

Combo Rounded Corners (RC)

Machine Size	MFG No.	Blade	Size	Kraft No.
<b>Allen/Razorback</b>				
30"	41696	Finish	6"x10-1/2"	SK237
		Comb.	6"x10-1/2"	SK236
36"	015890	Finish	6"x14"	SK100
		Comb.	8"x14"	SK101
		Float	10"x14"	SK102
46"	015695	Finish	6"x18"	SK214
		Comb.	8"x18"	SK215
		Float	10"x18"	SK105
016094	Comb.	8"x18"	SK215	
	Float	10"x18"	SK105	
	02822318	Float	10"x18"	SK105
<b>Bartell</b>				
24"	20455	Finish	4-3/4"x9"	SK238
30"	20407	Finish	4-3/4"x10"	SK239
		Finish	6"x10-1/2"	SK237
36"	20414	Finish	6"x14"	SK100
		Comb.	8"x14"	SK101
		Float	10"x14"	SK102
46"	20410	Finish	6"x18"	SK214
		Comb.	8"x18"	SK215
		Float	10"x18"	SK105
20479	Comb.	8"x14"	SK101	
	Float	10"x14"	SK102	
	20415	Float	10"x14"	SK102
<b>Edco (V-Notch Channel)</b>				
34" & 36"	F-1	Finish	6"x14"	SK300
		Comb.	8"x14"	SK301
		Float	10"x14"	SK302
42"	C-1	Finish	6"x16"	SK304
		Comb.	8"x16"	SK305
		Float	10"x16"	SK306
44"-48"	M-1	Finish	6"x18"	SK307
		Comb.	8"x18"	SK308
		Float	10"x18"	SK309
<b>Goldblatt</b>				
28"	19177	Comb.	6"x10"	SK177
36"	19172	Finish	6"x14"	SK172
		Comb.	8"x14"	SK179
		Float	10"x14"	SK102
19179	Comb.	8"x14"	SK179	
19102	Float	10"x14"	SK102	

Machine Size	MFG No.	Blade	Size	Kraft No.
<b>Master/Arrow</b>				
36"	RT36	Channel Finish	6"x14"	SK232
		Channel Comb.	8"x14"	SK233
		Finish	6"x14"	SK100
		Comb.	8"x14"	SK101
46"	3RT46	Channel Finish	6"x18"	SK234
		Comb.	8"x18"	SK215
		Float	10"x18"	SK105
3FF46	3RC46	Float	10"x18"	SK105
		Channel Comb.	8"x18"	SK235
<b>MBW</b>				
30"	NEW	Comb.	8"x10"	SK242
		Comb. Metric	8"x10"	SK242M8
36"	5347	Finish	6"x14"	SK100
		Comb.	8"x14"	SK101
		Float	10"x14"	SK102
46"	5402	Finish	6"x18"	SK214
		Comb.	8"x18"	SK215
		Float	10"x18"	SK105
5403	5383	Float	10"x14"	SK102
		Finish	6"x18"	SK214
		Comb.	8"x18"	SK215
5412	Comb.	8"x18"	SK215	
5413	Float	10"x18"	SK105	
<b>Stone</b>				
36"	34578	Finish	6"x14"	SK100
		Comb.	8"x14"	SK101
		Float	10"x14"	SK102
46"	34586	Finish	6"x18"	SK214
		Comb.	8"x18"	SK215
		Float	10"x18"	SK105
<b>Stow</b>				
Old Style	7394-401	Finish	6"x14"	SK186
		Comb.	8"x14"	SK187
		Float	10"x14"	SK102
34"	11686-503	Finish	6"x14"	SK100
		Comb.	8"x14"	SK101
		Float	10"x14"	SK102
36"	22027	Finish	6"x14"	SK100
		Comb.	8"x14"	SK101
		Float	10"x14"	SK102
42"	22029	Finish	6"x14"	SK100
		Comb.	8"x14"	SK101
		Float	10"x14"	SK102
46"	22028	Finish	6"x14"	SK100
		Comb.	8"x14"	SK101
		Float	10"x14"	SK102
10937-501	21637	Finish	6"x18"	SK214
		Comb.	8"x18"	SK215
		Float	10"x18"	SK105
21988	21989	Comb.	8"x18"	SK215
		Float	10"x18"	SK105
		21989	Float	10"x18"

## Retro Adapter Bar

Mount adapter bar to power troweler and quickly change blades with snap pins. Bar fits 7/8" channel. Each bar comes with two snap clips for mounting.

No.	Size	Fits
SK148	10" Long	36"
<i>(Only fits SK232 &amp; SK233)</i>		
SK150	14" Long	46"/48"
<i>(Only fits SK234 &amp; SK235)</i>		
SK147	Snap Clip for Bar	



## ProForm® UHMW Poly Blades

### Non-Marring Surface

Popular choice for polished and decorative application. **For walk-behind machines only. Not for use on Float Pans.**



	Fits most models	Comb.	8"x14"	SK101P
	Fits most models	Finish	6"x18"	SK214P
	Fits most models	Comb.	8"x18"	SK215P

Designed with a hard thick steel to cut down on blade changes on the job

Each blade is designed for longer life and greater performance

Long life blades are ideal for the tough demands of riding power trowelers

Machine Size	MFG No.	Blade	Size	Kraft No.
<b>Superior / Boren</b>				
36"	2836FL	Comb.	8"x14"	SK220
44"	2844FL	Comb.	8"x16"	SK226
		Float	10-1/2"x17-1/2"	SK108
		Float, Raised Clip	10-1/2"x17-1/2"	SK109
	2844C	Flat Finish RC	8"x16"	SK227
48"	2848FL	Comb.	8"x18"	SK228
<b>Wacker</b>				
36"	79638	Finish	6"x14"	SK100
	79637	Comb.	8"x14"	SK101
	75061	Float	10"x14"	SK102
48"	79642	Finish	6"x18"	SK214
	79641	Comb.	8"x18"	SK215
	112000	Float	10"x18"	SK105
<b>Wagman</b>				
24"	WB47590	Finish	4-3/4"x9"	SK238
	WB6105F	Finish	6"x10-1/2"	SK237
30"	WX5925M6	Comb. Metric	5"x9"	SK241
36"	WX614F	Finish	6"x14"	SK100
	WX8140	Comb.	8"x14"	SK101
	WX1014FO	Float	10"x14"	SK102
44"	WF816F	Flat Finish RC	8"x16"	SK227
46-48"	WX618F	Finish	6"x18"	SK214
	WX8180	Comb.	8"x18"	SK215
	WX1018FO	Float	10"x18"	SK105
	WX-818F	Flat Finish RC	8"x18"	SK217
60"	WX-623F	GOLD Finish	6"x23"	SK216G
	WX8230	GOLD Comb.	8"x23"	SK218G
<b>Whiteman / MultiQuip</b>				
24"	C244	Comb. Metric	5"x9"	SK241
36"	F-90	Finish	6"x14"	SK100
	C-844	Comb.	8"x14"	SK101
	CL-954F	Float	10"x14"	SK102
46-48"	F-400	Finish	6"x18"	SK214
	C-464	Comb.	8"x18"	SK215
	CL444F	Float	10"x18"	SK105
	RC818	Flat Finish RC	8"x18"	SK217
	F616	Finish	6"x16"	SK221
	C8160	Comb.	8"x16"	SK222
	RC816	Flat Finish RC	8"x16"	SK219
<b>Rounded Corner Combination Blades</b>				
Flat combination blade with 2" radius corners. Offers more blade surface.				
	Fits most popular models	Comb. RC	8"x14"	SK101R
		GOLD Comb. RC	8"x18"	SK215GR
		Comb. RC	8"x18"	SK215R
	Fits Superior	Comb. RC	8"x14"	SK220R
		Comb. RC	8"x16"	SK226R
		Comb. RC	8"x18"	SK228R

Quality and Value are the trademarks of every ProForm® Blade

**ProForm® Ultra Blue**  
15-25% Longer Life



Machine Size	Blade	Size	Part No.	Mfg. Compatibility
36"	Finish	6"x14"	SK100B	Fits Allen, Bartell, Stone, Stow, Whiteman, Wacker & other popular styles of Trowelers
	Comb.	8"x14"	SK101B	
	Finish	6"x18"	SK214B	
46"-48"	Comb.	8"x18"	SK215B	Fits Superior / Boren Trowelers
	Finish RC	8"x18"	SK217B	
	Comb.	8"x12-1/2"	SK225B	
	Comb.	8"x14"	SK220B	Fits Superior / Boren Trowelers
	Comb.	8"x16"	SK226B	
	Finish RC	8"x16"	SK227B	
	Comb.	8"x18"	SK228B	Fits Master Trowelers
Offset Channel	Comb.	8"x18"	SK231B	

**ProForm® Heavy-Duty Gold**  
Thick and Rugged  
25-50% Longer Life



Machine Size	Blade	Size	Part No.	Mfg. Compatibility
36"	Finish	6"x14"	SK100G	Fits Allen, Bartell, Stone, Stow, Whiteman, Wacker & other popular styles of Trowelers
	Comb.	8"x14"	SK101G	
	Comb. RC	8"x14"	SK107G	
46"-48"	Finish	6"x18"	SK214G	Fits Superior / Boren Trowelers
	Comb.	8"x18"	SK215G	
	Comb. RC	8"x18"	SK215GR	
	Finish RC	8"x18"	SK217G	
	Comb.	8"x16"	SK226G	Fits Superior / Boren Trowelers
	Comb.	8"x18"	SK228G	
60"	Finish	6"x23"	SK216G	Fits Whiteman Trowelers
	Comb.	8"x23"	SK218G	
46"	Finish	6"x18"	SK234G	Fits Master Trowelers
Offset Channel	Comb.	8"x18"	SK231G	

**Grinding Stone Holder (Only)**

Please specify troweler and make.  
SK312 (Up to 36" Machine Size)  
SK318 (Over 36" Machine Size)



**Grinding Stone Holder (With Stone)**

SK313 (Up to 36" Machine Size)  
SK319 (Over 36" Machine Size)



**Grinding Stone (Only)**

SK320 (6 Grit, 2"x2"x8")