

# Ribbed Abrasive

## STAIR TREAD + NOSING

This Ribbed Abrasive Stair Tread and Nosing is the industry's most popular choice. This nosing is economical, easy to install, and perfect for indoor and outdoor applications where extra safety is desired or required by code.

### FEATURES

**OPTIONAL VISION LINE** Customize your tread with rows of different colors. Easily mark a safe egress with UL listed photoluminescent or safety yellow fill.

**CONTINUOUS COLOR** No need to worry about walking off the color as the abrasive material filler is dyed throughout.

**QUICK SHIP OPTION\*** The short-tipped nose, *model STSB-P3E*, is now available with a quick ship option in stock lengths of 4 and 6 linear feet.



STSB-P3E shown

### DETAILS

**CHANNEL** Extruded Aluminum

**APPLICATION** Poured Concrete, Steel Pan, Terrazzo or Wood

**TREAD** Ribbed Abrasive

**WIDTH** 1-7/8, 3 or 4 inches

**LENGTH** Up to 12 linear feet

**MOUNTING** Anchor or Drilled Hole, Mech. Fastened

**NOSING** Short, Short-Tipped, Long or Angled

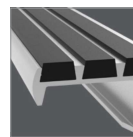
**OPTIONS** Photoluminescent, Vision Line, Mitered Cuts, Painted Undersides or Taped Tops

**CODE COMPLIANCE** 2010 ADA 504, 2015 IBC/ICC Section 1029.13.2, 2018 IBC/ICC Section 1029.14.2, and 2016 California Building Code Section 11B-504.5

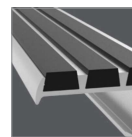
### MODELS

MODEL	WIDTH	TREAD	INSTALL
STSB-C1.875E	1-7/8"	Short	Cast-In, Extruded Anchor
STSB-C1.875D	1-7/8"	Short	Drilled Hole, Mech. Fastened
STSB-P1.875E	1-7/8"	Short-Tipped	Cast-In, Extruded Anchor
STSB-P1.875D	1-7/8"	Short-Tipped	Drilled Hole, Mech. Fastened
STSB-L1.875E	1-7/8"	Long	Cast-In, Extruded Anchor
STSB-L1.875D	1-7/8"	Long	Drilled Hole, Mech. Fastened
STSB-A1.875D	1-7/8"	Angled-Long	Drilled Hole, Mech. Fastened
STSB-C3E	3"	Short	Cast-In, Extruded Anchor
STSB-C3D	3"	Short	Drilled Hole, Mech. Fastened
STSB-P3E*	3"	Short-Tipped	Cast-In, Extruded Anchor

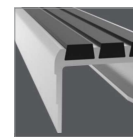
### NOSING



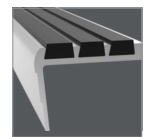
Short



Short-Tipped

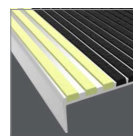


Long

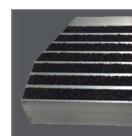


Angled

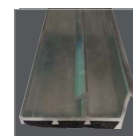
### OPTIONS



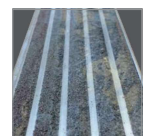
Vision Line



Mitered Cuts



Painted Undersides



Taped Tops

### MODELS

MODEL	WIDTH	TREAD	INSTALL
STSB-P3D	3"	Short-Tipped	Drilled Hole, Mech. Fastened
STSB-L3E	3"	Long	Cast-In, Extruded Anchor
STSB-L3D	3"	Long	Drilled Hole, Mech. Fastened
STSB-A3E	3"	Angled-Long	Cast-In, Extruded Anchor
STSB-A3D	3"	Angled-Long	Drilled Hole, Mech. Fastened
STSB-C4E	4"	Short	Cast-In, Extruded Anchor
STSB-C4D	4"	Short	Drilled Hole, Mech. Fastened
STSB-P4E	4"	Short-Tipped	Cast-In, Extruded Anchor
STSB-P4D	4"	Short-Tipped	Drilled Hole, Mech. Fastened