

Inset

STAIR TREAD + NOSING

Nystrom's Inset Treads and Nosings are an ideal solution for walkways, ramps, landings and stair treads that require a strip of anti-slip abrasive material. The inset treads are available in bar or full abrasive.

FEATURES

RAMPS & WALKWAYS Inset treads and nosings are the ideal solution for providing an anti-slip surface. Install on ramps, walkways, platforms and stairs on most surfaces.

ANTI-SLIP SAFETY TREADS Reduce slip hazards with ADA and OSHA compliant abrasive stair treads. Abrasive treads provide a high level of slip resistance.

CONTINUOUS COLOR No need to worry about walking off the color as the abrasive material filler is dyed throughout.



STSF-N2.25E shown

DETAILS

CHANNEL Extruded Aluminum

APPLICATION Marble/Stone, Poured Concrete, Steel Pan, Terrazzo or Wood

TREAD

- STSB: Ribbed Abrasive or EcoTread
- STSF: Full Abrasive

WIDTH 1-3/8, 2-1/4 or 3 inches

LENGTH Up to 12 linear feet

MOUNTING Anchor or Drilled Hole, Mech. Fastened

NOSING None

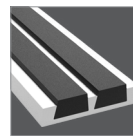
OPTIONS Photoluminescent, Mitered Cuts, Painted Undersides or Taped Tops

CODE COMPLIANCE 2010 ADA 504, 2015 IBC/ICC Section 1029.13.2, 2018 IBC/ICC Section 1029.14.2, and 2016 California Building Code Section 11B-504.4.1 (STSF-N2.25 only) and 11B-504.5

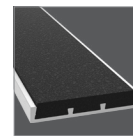
RIBBED MODELS

MODEL	WIDTH	TREAD	INSTALL
STSB-N1.375D	1-3/8"	Abrasive Grit	Drilled Hole, Mech. Fastened
STSB-N1.375E	1-3/8"		Cast-In, Extruded Anchor
STSB-N3D	3"		Drilled Hole, Mech. Fastened
STSB-N3E	3"		Cast-In, Extruded Anchor
STSB-N1.375D-ECO	1-3/8"	EcoTread	Drilled Hole, Mech. Fastened
STSB-N1.375E-ECO	1-3/8"		Cast-In, Extruded Anchor
STSB-N3D-ECO	3"		Drilled Hole, Mech. Fastened
STSB-N3E-ECO	3"		Cast-In, Extruded Anchor

TREAD

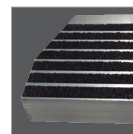


Ribbed Abrasive

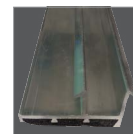


Full Abrasive

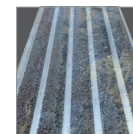
OPTIONS



Mitered Cuts



Painted Undersides



Taped Tops

FULL ABRASIVE MODELS

MODEL	WIDTH	INSTALL
STSF-N2.25D	2-1/4"	Drilled Hole, Mech. Fastened
STSF-N2.25E	2-1/4"	Cast-In, Extruded Anchor