



Single Part Stair Treads + Nosings

Model(s): Ribbed Bar Abrasive, Full Abrasive, Inset

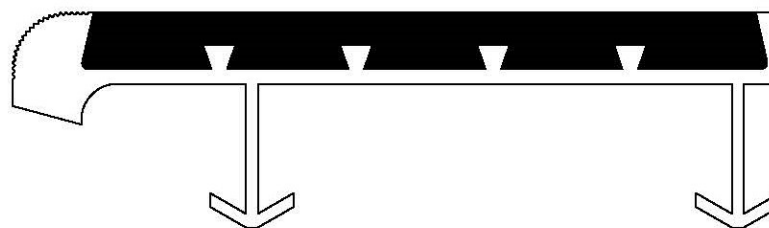
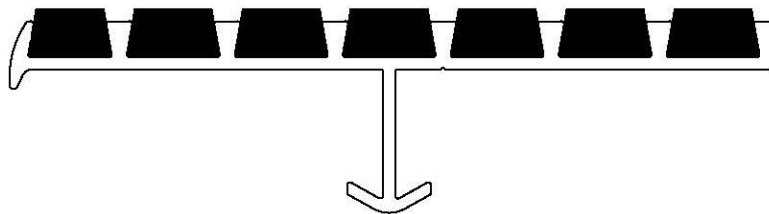


TABLE OF CONTENTS

Table of Contents

General Description 3

Installation 4

Operation 5

Maintenance 6

Replacement Parts 7

Standard Warranty 8

Factory Assistance..... 9

Copyright

2019 by Nystrom, Inc. All rights reserved.

This document contains proprietary information. No part of this document may be reproduced without the prior written consent of Nystrom, Inc.

Note

The information in this document is subject to change without notice.

General Safety Precautions

Improper selection, installation, or use can cause personal injury or property damage. It is solely the responsibility of the user, through its own analysis to select products suitable for their specific application requirements, ensure they are properly maintained, and limit their use to its intended purpose.

Follow proper local, state and federal regulations for proper installation and operation requirements.

GENERAL DESCRIPTION

Stair treads and nosings are designed for years of safe passage. Proper installation is critical to the product performance. Locally accepted installation practices and procedures should be followed to ensure a safe stairway system that meets all local code requirements, including Occupational Safety and Health Administration (OSHA), Americans with Disabilities Act (ADA), International Code Council (ICC) and International Building Code (IBC).

The following is a general instruction for installing, operating and maintaining stair treads and nosings. These are general guidelines only.



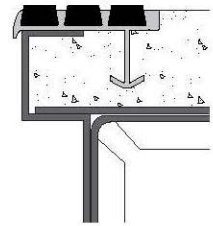
INSTALLATION

Preparation

Please read the complete instructions carefully before beginning any work.

- Verify that all products listed on the packaging slip are included in the package.
- Check product for damage.

Note: If damaged, report a freight claim immediately and leave the products in their packaging. If you sign for products without reporting damage, you waive the right to a freight claim.



Steel Pan Stair
Concrete filled

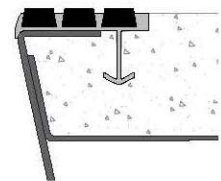
Installation

Anti-slip metal stair nosings are designed to be fully embedded in the substrate (most often concrete) which provides total support for the nosing.

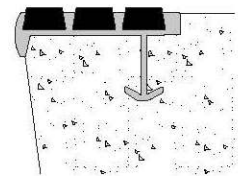
Cast-In (Steel Pan Stairs, Poured Concrete or Terrazzo):

1. Pour the concrete.
2. Place the stair nosings into position in the concrete.
3. Tamp the stair nosings to ensure proper concrete formation around the anchors on the undersides.

Note: Any voids left between the underside of the metal stair nosing and the substrate will allow flexing of the stair nosing itself. It is vital that the installer tamp down the stair nosings to totally seat into the substrate and fully rest upon any riser return, such as in pan-filled steps. This action will prevent the occurrence of hollows and voids, which can lead to flexing and cantilevering of the nosing.



Sloped Riser Steel
Pan Stair
Concrete filled

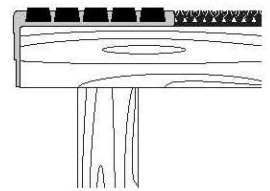


Concrete Stair

Mechanically Fastened (*Wood, Marble or Terrazzo Stairs*):

Surface Mount

1. Align nosing flush to end of wood tread.
2. Fasten with #10 wood screws in pre-drilled, countersunk holes.



Wood Tread
backed with carpet, tile or
other material

Recessed/Flush

1. Mark and rabbit out 3/8-inch-deep channel for tread to sit into.
2. Fasten with #10 screws in pre-drilled, countersunk holes.

or

Apply a minimum 3/16-inch (5mm) bead of construction adhesive (*by others*) to the underside of the nosing. Apply in a zig-zag pattern along the full width and length of the nosing.



Terrazzo/Marble Tread
rabbeted into tread

OPERATION

1. Photoluminescent Option

1. Exposure Requirements:
 - A. The minimum amount of exposure to direct sunlight is 60 minutes
 - B. The minimum amount of exposure to artificial ambient illumination is 60 minutes from the following:
 - i. Fluorescent straight tube T8 or T12, 4000 – 4500 K color temperature
 - ii. Incandescent soft white 2700 – 3000 K color temperature
 - iii. LED 2700 – 3000 K color temperature
2. The control of the ambient illumination necessary to charge the luminous egress-path-marking system should be restricted to authorized personnel only.
3. Failure to supply the above minimum exposure can prevent the luminous egress-path-marking from performing as intended.
4. No specific building surface treatment is required for the luminous egress-path-marking system to function properly.
5. Reliable external illumination *is required at all times* during building occupancy.

MAINTENANCE

Keep stair treads and nosings free of debris and dirt by sweeping or vacuuming regularly. Heavy-duty commercial cleaners will not harm nosings but are generally not necessary. If nosings are damaged, please contact the factory for a repair kit or replacement nosings.

Cleaning

- Treads should be swept with a broom or vacuumed with a heavy-duty commercial vacuum cleaner at least once a week.
- When needed, scrub surface vigorously with a stiff bristled brush using a mild detergent. *Do not use any product containing solvents, such as Acetone. It will break down the abrasive adhesive.* We suggest using Murphy's Oil Soap® or Simple Green®. Rinse thoroughly with water after cleaning.
- Scuff marks on the aluminum nose can be removed by rubbing with a fine steel wool and a commercial cleaning agent.
- To remove snow and ice, use deicing compounds such as calcium chloride or sodium chloride.
- DO NOT CLEAN WITH A PRESSURE WASHER

REPLACEMENT PARTS

PART NUMBER	DESCRIPTION
ST-KIT-BLACK-1G	1 GALLON BLACK ABRASIVE GRIT REPAIR KIT
ST-KIT-BLACK-1Q	1 QUART BLACK ABRASIVE GRIT REPAIR KIT
ST-KIT-C1-1Q	1 QUART PHOTOLUMINESCENT ABRASIVE GRIT REPAIR KIT
ST-KIT-C2-1Q	1 QUART BROWN ABRASIVE GRIT REPAIR KIT
ST-KIT-C3-1Q	1 QUART BURGUNDY ABRASIVE GRIT REPAIR KIT
ST-KIT-C4-1Q	1 QUART GRAY ABRASIVE GRIT REPAIR KIT
ST-KIT-C5-1Q	1 QUART YELLOW ABRASIVE GRIT REPAIR KIT
ST-KIT-C6-1Q	1 QUART GREEN ABRASIVE GRIT REPAIR KIT
ST-KIT-C7-1Q	1 QUART RED ABRASIVE GRIT REPAIR KIT
ST-KIT-C8-1Q	1 QUART BUFF/ORANGE ABRASIVE GRIT REPAIR KIT
ST-KIT-C9-1Q	1 QUART BLUE ABRASIVE GRIT REPAIR KIT



REPAIR KIT

Contains Abrasive, Epoxy Hardener and Epoxy Resin

COLORS



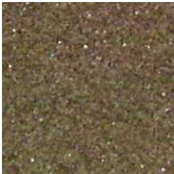
Black



Yellow



Photoluminescent



Brown



Burgundy



Gray



Green



Red



Buff/Orange

STANDARD WARRANTY

Nystrom warrants all Stair Treads and Nosings to be free from manufacturing defects in materials, factory finishes and workmanship from the ***date of shipment*** for a period of:

1 Year

Should a product fail to function in normal use within this period, Nystrom shall furnish a replacement or new part at Nystrom's discretion.

Failure to use product in methods consistent with Nystrom product manuals shall relieve Nystrom of any liability.

Our liability under this warranty excludes installation or removal costs involved in the product replacement and excludes any responsibility for incidental or consequential damage of any nature.

FACTORY ASSISTANCE

Nystrom engineers and manufactures stair tread and nosing products for worldwide customers. Our products enable safe exiting in stairways. Recognized as an industry leader, Nystrom has been relied upon by building and construction professions for over 70 years and we pride ourselves in offering exceptional technical support.

Please do not return any product before discussing your application problem with a Nystrom representative and obtaining a Return Authorization.

Your Nystrom representative is eager to help you. Please feel free to call your representative or contact Nystrom to discuss your application.

Nystrom
9300 73rd Avenue North
Minneapolis, MN 55428

Phone: 800.547.2635
Fax: 800.317.8770
Email: info@nystrom.com

Visit www.nystrom.com for the latest version of this document and more information.



9300 73rd Avenue North
Minneapolis, MN 55428

Phone (800) 547-2635
Fax (800) 317-8770



www.nystrom.com